

**REGULAR CHURCH USERS**

<b>Brownies—Tuesday evenings</b>	<b>Tel 07539 363 997</b>
<b>Campbell School of Dance</b> Monday and Friday 4pm to 7pm	Tel. 020 8777 7529
Community of Faith (Brazilian Church)	Tel.07429 263 407
<b>Dog Training</b> Monday 7pm - 9pm	Tel. 07939 023 135
<b>Driving School (KISS)</b> Tuesday 7.15pm - 10pm	Tel. 0845 245 0405
<b>JAKAB Fitness &amp; Self Defence; Weds. 8—10pm</b>	Tel. 020 83015219
<b>Jumoke After School Club &amp; Jazzy Juniors</b> School Holidays Monday to Friday 9am - 5pm; Term time 4pm—6pm	Tel. 020 8656 8684
<b>Living Vine Ministry</b>	<b>Tel. 020 8249 2352</b>
<b>Love 2 Dance</b> Friday 6.45pm to 8.45pm	Tel. 020 8244 0512
<b>Only Believe Assembly</b> Tues. 7.30pm– 10.30pm	Tel.020 8778 0863
<b>Penge Community Pre-School</b> Monday to Friday 9.15am to 4pm	Tel. 020 8289 6771
<b>Salvation &amp; Deliverance Ministry</b> Sunday 2pm to 4.30pm; Tuesday 7pm—9pm	Tel. 020 8683 3094
<b>Tai Chi</b> - Thursday 8pm - 10pm	Tel. 01424 420 050

\*\*\*\*\*

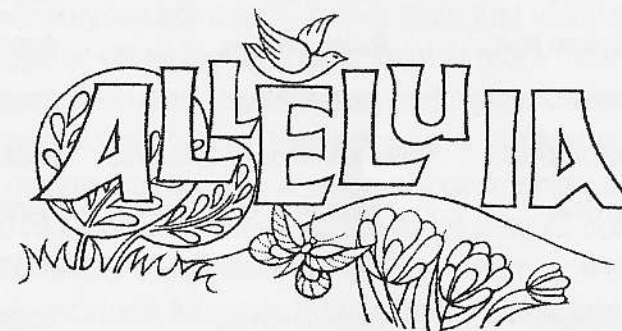
**UNITY OF SELF COUNSELLING SERVICE**

Are you depressed, confused or just would like someone to talk to?  
I am a qualified counsellor and supervisor offering a confidential  
service to adults, children and families

CALL ME TO MAKE AN APPOINTMENT ON 020 8244 0512 or 07956 351 511  
Email::wendy.blenman@ntlworld.com

**WENDY BLENMAN (Dip. Couns., MSc in therapeutic counselling)**

# ANERLEY CENTRE ECHO



## EASTER 2014

The Newsletter of

### ANERLEY METHODIST CHURCH

Oakfield Road,  
Anerley  
London SE20 8QT

USEFUL CONTACTS (as at 01.09.12) All prefix 020

Church (Minister is not available on this number)		8289 6771
Minister	Rev. Imran Malik	8653 4902
Church Council Secretary	Marian Young	8402 6618
Treasurer	Andrew Tredinnick	8658 2347
Property Steward	David Hynes	8289 3524
Property Bookings	David Hynes	8289 3524
Baptismal/Cradle Roll	Sandra Hynes	8289 3524
Junior Church Secretary	Janice Friend	8659 2905
Christian Action Group	Valerie & Andrew Tredinnick	8658 2347
Wednesday Club	Marian Young	8402 6618
Church Library	Valerie Tredinnick	8658 2347
Missions Treasurer	Sandra Hynes	8289 3524
Junior Missionary Association	Dinah Anaman	7274 6294
Action for Children	Valerie Tredinnick	8658 2347
Christian Aid		
Oxfam	Valerie Tredinnick	8658 2347
Penge Forum	Marian Young	8402 6618

\*\*\*\*\*

EDITOR: Marian Young phone: 020 8402 6618

E-mail [m.young23@ntlworld.com](mailto:m.young23@ntlworld.com)

**ALL CONTRIBUTIONS FOR THE NEXT MAGAZINE SHOULD  
BE GIVEN TO MARIAN YOUNG BY SUNDAY 11TH MAY 2014**

**Church website: [www.anerleymethodist.org.uk](http://www.anerleymethodist.org.uk)**

**April/May 2014**

**Volume 45 Number 6**

### **FROM THE MINISTER**

Dear Friends,

We are already in the third week of Lent and I hope that you are taking advantage of this opportunity to get closer to God and reflect on your spirituality rather than just waiting for your Easter eggs or other indulgences. Lent is more than giving up or taking on! It is about repentance and reflection on God's work for us through Christ. Repentance is not just about lamenting our past sins but it is more about opening our heart and mind to God and inviting Jesus to take more control of our lives. Lent is springtime for us to blossom and to be trimmed to produce fullness of life within us and around us. I would like to encourage you to take Lent seriously and practice the fundamentals of observing Lent.

Daily prayer is helpful to achieve the transformation we seek through this period. Take every opportunity to say small prayers throughout the day. Pray for the joyful things and annoying things that are happening during the course of the day. Pray when someone cuts you off in traffic, pray for those who are thankful for what you do and pray for those people who need kindness and love. Praying this way makes life smoother and you are more aware of the presence of the Holy Spirit. Our actions are the reflection of our prayers. In prayer we receive from God and through our actions we give and receive from each other. Make efforts to reflect your prayer life by giving encouragement, a word of praise to those who need assurance, show kindness to those who

could benefit from your fellowship and tell those around you what it truly means to observe lent.

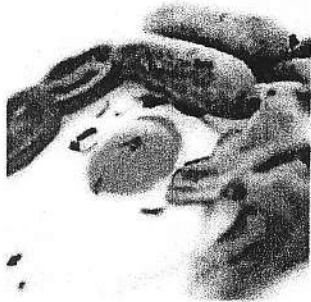
May we take the season of Lent seriously, not only to transform ourselves, but also to bring transformation to the people and places around us. Amen

Imran

## *Family Fun-Filled Breakfast!*

*Anerley Methodist church, by Anerley station,  
behind the What! shop*

**Sat 29 Mar & Sat 26 Apr 9:30-11:30am**



*Bring the  
whole family*

Activities will include  
art/craft activities,  
'U' films, toys, board  
games and more!

### Contribution

£2.50— Adult  
£1.50— Child (2—10 years)  
£6— 2 Adults + 2 Children  
Free hot & cold drinks



All children must be accompanied by an adult aged 16 or over -

For more details visit [www.anerleymethodist.org](http://www.anerleymethodist.org)

## ROUND THE FAMILY

Congratulations to our Minister, Imran, following confirmation from the District Probationers' Oversight Committee that he has been accepted for ordination. His ordination service will take place on 29th June at Darlington Street Methodist Church, Wolverhampton. Congratulations also to Joan Loring, who celebrated her 90th Birthday on 20th March.

Please remember in your prayers Sandra Hynes, gradually recovering from her hip operation.

We were sorry to hear of the death at the age of 97 of a former member of our church, Eileen Rhodes, at the beginning of March. Eileen, her husband Seymour and their two boys Leonard and George, worshipped with us for a few years in the late 1950s leaving us in 1960 to join Clock House Methodist Church after they moved house. Seymour returned on several occasions to preach at our church and Eileen returned to visit us a few times after his death. Please remember Eileen's family in your prayers.

Please remember those of our church community who are away from us at the moment. Josie Oppong is spending several months in Ghana in connection with her work for Christian Aid, Vanessa Anaman is completing her exchange year in California and will be home in the summer, and Rose and Kwame have been in Ghana for several months visiting family and friends.

Congratulations to Ronnie Butler, who has completed a course in Web Design using Dreamweaver at South Thames College.

Our 149th Church Anniversary will be held on 11th May and our preacher will be Keith Halstead from Epsom. Please join with us on this special day.

Marian

## Regular Giving

Prior to the 18th century the legal year commenced on 25th March (Lady Day) which was also the start of the financial year. When the country changed from the Julian calendar to the Gregorian one in order to come into line with the rest of Europe in 1752, it was deemed that the 2nd September would be followed by 14th. This 'loss' of eleven days caused a public outcry, not least because taxpayers thought they would be charged a whole year's tax for just 354 days. The Revenue Authorities decided therefore to 'add' eleven days to the financial year bringing us to the 6th April.

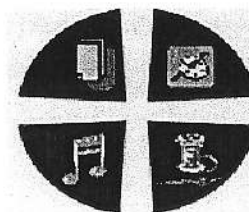
I mention this only to remind everyone that now (March/April) is a good time to review your giving to the church. Whilst it is recognised that for some people during the ongoing economic difficulties their income has not kept pace with inflation, for others their income has enjoyed a measure of protection. However, the costs incurred by the church continue to rise steadily each year. So if you are in a position to increase your giving this would be especially welcome. For those that contribute by direct bank payments this means remembering to notify the bank.

Whether or not you are able to give more at this time, the financial support you currently provide is very much appreciated and helps to support the work of the church both here and across the Circuit.

Andrew Tredinnick (Church Treasurer)

## Methodist Churches in the Circuits of

Blackheath and Crystal Palace, Bromley, Croydon,  
Orpington and Chislehurst, and Purley



# METHODIST TALENTS FESTIVAL

will be taking place on

**Saturday 7<sup>th</sup> March 2015**

at Shirley Methodist Church, Croydon, CR0 8SD

The Festival syllabuses will be available in your church  
at the end of June, but to whet your appetite here are  
the subjects for the Photography Classes:

One black and white OR colour photograph per entrant,  
no bigger than 17.5 cm x 12.5 cm / 7 ins x 5 ins

<b>11 yrs &amp; under</b>	Summertime
<b>12-14 yrs</b>	Summertime
<b>15-18 yrs</b>	Any season (identify on your entry)
<b>19 yrs &amp; over</b>	Any season (identify on your entry)

### Photography Portfolio

FOUR black and white OR colour photographs per entrant,  
each print no more than 17.5 cm x 12.5 cm / 7 ins x 5 ins  
This entry should be mounted.

Any age

Weather

### **OXFAM pledged giving scheme**

As most of you know Joan Loring was the Church representative for many years. At the age of 90 she has now decided to step down from this role. As I take up the reins I would like to thank Joan on behalf of the Church for the work she has done on behalf of OXFAM.

I'm hoping to share with you in each edition of the magazine some of the latest information contained in the pledged giving newsletter. Hopefully by reading about the work OXFAM is engaged in you may feel able to become a pledged giver yourself. As little as 50p per month is all that I ask you to pledge – more if you are able.

I had difficulty in deciding which story to bring you this time – an update on the situation in Syria or the 'Lift Lives for Good' campaign. On reflection, I thought I would tell you about the campaign.

Not only is it aimed at raising funds for our vital work, but 'Lift Lives for Good' will underpin most future OXFAM campaigns.

'Lifting Lives' is a new way of talking about OXFAM and getting the nation behind the unique impact that we have on poor communities around the world.

Take the story of Sita a mother who becomes a catalyst for change for not only her family, but her whole community, when she receives a cow. Sita is a member of an OXFAM-backed Sri Lankan Co-operative.

The campaign is an engaging way to show the knock-on effect that OXFAM's work has, focussing on the chain reaction that starts when one person helps another, and how the posi-

tive effects can snowball.

Our belief has always been that people in the developing world have the potential to change their own lives – all they need is a little support. This lift can empower people to make change, helping them to alter the course of their lives, so in turn they can lift others around them, setting in motion a process of change that spreads throughout their community.

So by giving to OXFAM you're not just lifting one person, you're lifting the lives of entire communities – now and for good. If you would like to support OXFAM through pledged giving please do have a word with me. Thank you.

Valerie

### **LEWISHAM and CRYSTAL PALACE CIRCUIT**

### **EASTER OFFERING SERVICE**

Sunday 11th May

At 4pm

At Sunfields Methodist Church  
Old Dover Road, Charlton, SE3 8SJ

### **"RISK THE PATH HE TROD"**

Preacher: Olubunmi Olayisade

Mission and the World Church, Methodist Church House

Andrew's description of his sponsored walk with Imran on Monday 3<sup>rd</sup> March when they walked between the 9 circuit churches to raise funds for the Living Hope Project.

Our route avoided busy roads where possible, utilised 'green spaces', and started and finished at points with convenient bus services. By setting out from Upper Norwood we also avoided having a steep climb to finish the day.

It was a bright, sunny morning when at 9.20am we were waved off from **Upper Norwood** church by Yvonne Hurford-Smith, who also took our photograph showing us with our Living Hope T-shirts. An easy downhill stretch to Anerley followed as we passed the surviving base of one of the old Crystal Palace towers (which encroaches onto the pavement) and later an attractive wall painting depicting the view back up Anerley Hill towards the impressive glass structure.

A brief stop at **Anerley** church allowed Imran to drop off some books. By chance Audrey Bobb-Sayers was on hand to take another photo of us. Our route continued through the Groves Estate to Penge Recreation Ground, past the King William IV Alms-houses and over the steps at Penge East Station to reach Leonard Road and Alexandra Park.

Once through the park we made our way along Woodbastwick Road and the first shower of the day greeted us. We took more pictures outside **Wesley Hall** (10.20am) before using narrow Berryman's Lane to lead us to Mayow Road. On a fine day we would have walked on the grass in the park, but today we stayed with the pavement, later crossing into Sunderland Road and picking up the footpath exiting beside **For-**

**est Hill** church. A short stop gave us the chance to take another picture to record our progress - so far so good. Imran commented that it would have been so much easier if

we were just walking around the 4 churches of the former Sydenham & Forest Hill Circuit!

In Como Road, Margaret Baker saw us from her car and stopped to wish us well. We continued via Houston and Winsford Roads to join the River Pool Linear Park which offers an attractive 'green' interlude. During this stretch the waters of the River Pool are joined by those of the Ravensbourne and the combined flow becomes quite noisy. By now it was raining again but we pressed on under a brick railway arch and in complete contrast found ourselves in a small retail park. The aromas of cooked food from a nearby refreshment stall were very tempting but we continued on and passed an entrance to Catford Bridge Station to re-join the Ravensbourne as it entered Ladywell Fields. An information panel beside a mature elm tree stated that it was one of only a few to withstand Dutch elm disease. It appeared quite healthy and is reckoned to be good for another 200 years. An impressive spiral footbridge over the railway then brought us into Ladywell Park. By now the rain had stopped and we were able to sit down on a park bench for late 'elevenses'. Snap – Imran and I had identical flasks!

Our exit from the park led past an attractive display of crocuses and snowdrops, through the burial ground of St. Mary's Church and into the hustle and bustle of Lewisham High Street. A few hundred yards later we reached the shopping centre, turned right into Albion Way and had the obligatory photo-stop outside **Lewisham** church.

Now the weather really began to show its hand. As we made our way to Lee High Road, crossing the River Quaggy at the rear of Penfold's garage, the rain intensified and turned to hail. The road became awash and great splashes of water were thrown up by the traffic onto the pavement. Even so we still managed to note the flat stone set in the footway marking the Greenwich Meridian. Just a few yards further into the eastern hemisphere, however, we had to seek the refuge of a bus shelter.

In a while the rain began to ease and we moved off passing the Merchant Taylor's Alms-houses and Boone Chapel but it was still too wet to stop and read the information panels. We next turned into Lee Park (a steady climb) and reached Blackheath village. As we made our way onto the heath the rain intensified once more. We took the opportunity to walk on the grass, and Imran discovered that his boots were not fully water-proof. We then crossed a busy road junction before turning into Avington Way and the green sward of Vicarage Avenue which provided a break from the noisy traffic.

We crossed the Blackwall Tunnel Approach and reached **Sunfields** church at 1.10pm, where we have a brief stop. One of the nursery staff kindly took a picture of two very wet walkers!

Shooters Hill Road is a long drag, but by now the rain had stopped, the sun came out, and a brisk pace helped us to begin to dry out. We turned right at the former police station and headed off towards Westmount Road encouraged by the knowledge that our lunch stop was close at hand. We 'clocked' **Eltham Park** church and continued to Esme Russell-Mitra's house, arriving just after 2 o'clock to enjoy the

lunch she had kindly prepared, also in the company of Barbara Charlick.

It was hard to tear ourselves away, especially as it was pouring again, but Mary Sparkes had offered to meet us at Burnt Ash and we were almost an hour behind schedule. I left a message on her answerphone – would she get it? Would she be there? Thankfully the rain stopped. We skirted Eltham High Street and made our way along Tilt Yard Approach to Eltham Palace (where King Henry VIII spent much of his childhood). A gradual climb along King John's Walk followed and we could just make out Canary Wharf and the City buildings through the mist (I think Imran was quite surprised to find adjoining fields with ponies and donkeys so close to the centre of London). We then dropped down to cross a railway line and the busy A20 to reach some of the buildings of Eltham College where the 'Chariots of Fire' hero, Eric Liddell, was once a pupil. Rather than follow the Green Chain Walk footpath skirting the College grounds we chose the mud-free way along pavements. When we turned the corner at the top of Senlac Road our spirits soared as we saw the church porch light on and the door open. We had reached **Burnt Ash** church (4pm) – just one more to go.

Mary was there, together with David Maxwell – on hand were 'energy drinks', cakes, dry towels and some plasters, just in case of blisters. More pictures were taken before we set off again along Kingsland Road and entered Railway Children's Walk, named in memory of Mrs Nesbitt the author of the well-known story who lived nearby. After crossing the railway and passing the now closed fire station we turned into Verdant Lane observing the mosque, which Imran informed me was

not a part of mainstream Islam. A little way further and we turned up Sandhurst Road to reach Torridon Road and **Hither Green** church on the stroke of 5pm. We took our final photographs. We had covered about 16½ miles. It was then just a short step to get the bus for our journey home.

7<sup>th</sup> March 2014

## CULTIV8 PENGE

The Conservation Volunteers (TCV) are working with Affinity Sutton on the project Cultiv8 to find out how their tenants and the local residents in Penge would like to improve their open spaces, and how best to support them to do so, whether it be through food growing, community gardening, or through training so people feel confident about their own garden.

From March to April we are organising 4 events in Penge aimed at families and adults to engage the community with green issues, as well as finding out how they want to get involved in improving their green spaces. Additionally I am keen to speak to as many Affinity Sutton tenant and interested local residents as possible to find out their opinions on their local open spaces and how to improve them.

Our next event is on Saturday March 29<sup>th</sup> from 11am to 2pm at Bromley Active Living Centre (BALC) in Queen Adelaide estate, Penge.

Lizzy Kaimakamis.  
*Senior Green Gym Project Officer, South London.*

Tel: 07740 899 689

## COOKERY CORNER

### Lime and Orange Mousse

#### Ingredients

1 packet lime jelly	1 tin mandarin oranges
¼ pint boiling water	1 small tin evaporated milk
small amount of grated chocolate	1 pint soufflé dish

#### Method

1. Chill the evaporated milk in the fridge for an hour or more.
2. Break up the jelly and put into a bowl.
3. Pour on boiling water and stir to dissolve.
4. Drain the juice from the mandarin oranges and chop half the fruit.
5. Add the chopped fruit and the juice to the jelly.
6. Leave in a cold place until it is on the point of setting.
7. Whisk the evaporated milk until thick and then whisk in the jelly.
8. When evenly blended, pour into the soufflé dish and put in the fridge to set.
9. When set, decorate with the rest of the mandarin segments and grated chocolate.

Ann Vickery



## CIRCUIT MISSIONS AND METHODIST WOMEN IN BRITAIN (MWiB)

The London Day of the MWiB was held on Saturday 21st September 2013 at Methodist Central Hall hosted by London District Sector B. The morning session was devoted to District news and presentation of cheques £730 each to the Adavu project and Children Unite. Helen Veitch of Children Unite was the Guest Speaker, who spoke about the issue of exploitation and abuse of young child domestic workers and urged those present to support the ratifying of the International Labour Organisation's Domestic Workers' Convention, 2011.

The service of induction of the new London District President, Deacon Jackie Fowler, was in the afternoon. It was an inspiring service. The guest preacher was the Rev. Michaela Youngson, joint Chair of the Methodist Church London District. The new President introduced the project for the next two years - "Transforming Lives and Communities" (TLC). It is in two parts. One part is supporting the work of RA-HAB, which is working with prostitutes, enabling them to regain their lives and self-respect. The name comes from the story of Rahab in the Bible (Joshua 2 :10). The other part is "Building Bridges through Mission Projects", supporting the work of a Deacon in South Africa who through her mission is seeking to empower women through training programmes.

Our Circuit usually collects funds for the MWiB project through the Summer Garden party and due to the amazing generosity of everyone we contribute a substantial amount to Sector C.

The Circuit Missions Committee



Andrew Hynes  
29A Bourdon Road  
Anerley  
London  
SE20 7SP  
Phone: - 07960 588116  
Email: - a.hynes2@ntlworld.com  
a.hynes2@ntlworld.com



**Handyman Service for all the jobs you need around your home, garden, office or business.**

**I offer an honest, friendly, professional and reliable service with quality workmanship.**

**Everything from repairs, renovations and maintenance of your home and garden to complete bathroom and kitchen installations.**

**I can provide a one-off or a regular maintenance service with quotations tailored to suit your needs - at affordable prices.**

**No job too small.**

*Andy*





## Penge Community Pre-School

Leader: Sarah Batchelor                      Anerley Methodist Church  
 Deputy Leader: Sue Charlesworth        Oakfield Road  
 SENCO: Dawn McConochie                Anerley SE20 8QA

Ofsted Inspected

Established 30 years

Learning through play  
 for children 3 to 5 years

£7.50 per Morning or Afternoon

9.15am to 12.15pm & 1pm to 4pm

Government funding for 3 & 4 year olds

Vacancies

**Tel. 020 8289 6771 or 01959 575 441**

# METHODIST

METHODIST INSURANCE Crystal clear insurance

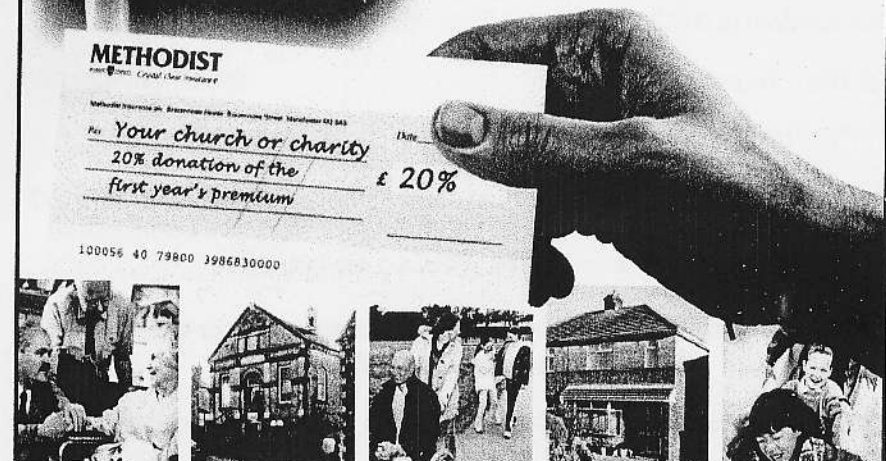
Protect your  
 home and contents with us and raise money  
 for **your church**  
 or **charity**



Insure your home and contents with Methodist Insurance and we'll give **20% of the first year's premium (or minimum £20, whichever is the greater amount) to your church or your chosen charity.**

We make **generous grants** out of profits to the **Methodist Church** to help sustain its work and witness. In fact, over the last 130 years we have been able to provide grants totalling over **£10 million.**

For a leaflet about the **Methodist Insurance Church and Charity Donation Scheme** call on **0845 7697531** or email us at [enquiries@micmail.com](mailto:enquiries@micmail.com)



Registered no. 6369 England. Authorised and regulated by the Financial Services Authority, members of the Association of British Insurers, the Financial Services Compensation Scheme and the Financial Ombudsman Service. MP6434 08/05

## DATES FOR YOUR DIARY

### APRIL

- Wed 2<sup>nd</sup> Wednesday Club 8pm: Quiz
- Fri 4th Lent Study 7.45pm at Upper Norwood Methodist Church: "Jesus - Conquerer of Death".
- Tue 8th Christian Action Group 8pm at 32 Lloyds way, Speaker: Rev. Brian Surrey
- Wed 9<sup>th</sup> Wednesday Club 8pm Surprise Evening
- Fr. 11th Lent Study 7.45 at Upper Norwood Methodist Church: "Jesus - Lord and Brother."
- Sun 13th General Church Meeting after morning worship.
- Wed 16<sup>th</sup> Wednesday Club 8pm WHOT
- Thur 17th Maundy Thursday Lovefeast 7pm at Anerley
- Fri 18th Good Friday service 9.15am
- Sun 20th Easter Morning Communion at 9.15am followed by breakfast  
Easter All Age Worship 11am. Preacher: Valerie Tredinnick
- Wed 23rd Wednesday Club 8pm Games Evening
- Sat 26th Family Fun-Filled Breakfast at the Church 9.30 — 11.30am
- Sun 27th All Age Worship 11am. Preacher: Lilian Barth
- Wed 30th Wednesday Club 8pm Programme Planning

### MAY

- Tue 6th Stewards' meeting 8pm at 19 Felmingham Rd.
- Wed 7<sup>th</sup> Wednesday Club 8pm Surprise evening
- Sun 11<sup>th</sup> Church Anniversary 11am Preacher: Keith Halstead
- Sun 11<sup>th</sup> MAGAZINE ITEMS TO BE GIVEN TO MARIAN

- Sun 11th Easter Offering Service 4 pm at Sunfields Methodist Church. Preacher: Olubunmi Olayisade
- Tue 12th Christian Action Group 8pm at 5 Percy Road Speaker: Rev. Derek Stanworth
- Wed 14<sup>th</sup> Wednesday Club Meal 7.15pm at Coombe Lodge
- Sun 18th District Ordinands' Testimony Service. 6.30pm at Wesley's Chapel, City Road, London EC1Y 1AU
- Wed 21<sup>ns</sup> Wednesday Club 8.00pm UNO
- Sun 26<sup>th</sup> All Age Worship 11am Preacher: Annie Mokgohloa
- Wed 29<sup>th</sup> Wednesday Club 7.30pm Ramble

### JUNE

- Sat 7th Penge Festival Fete at Royston Field 11am
- Mon 9th Christian Action Group 8pm at 163 Clock House Road Speaker: Jeanette Warren
- Thur 12th Circuit Meeting 7.45pm at Lewisham
- Thur 19th Pastoral Committee 8pm at the Church
- Sat 21st Circuit Missions Garden Party at Forest Hill

Morning services are held every Sunday at 11am. Holy Communion is usually celebrated on the 3rd Sunday of the Month and All Age Worship usually takes place on the 4th Sunday. During April Holy Communion will be celebrated at the Easter Communion Service at 9.15am and the 11am service will be an additional All Age Worship. In May Holy Communion will be celebrated on the 1st Sunday, 4th May.

Evening Services are usually held at the church on the 2nd and 4th Sundays of each month at 6.30pm, and Holy Communion is usually celebrated on the 2nd Sunday. However, during May will be no evening service on the 2nd Sunday (the 13th), and no evening Communion.